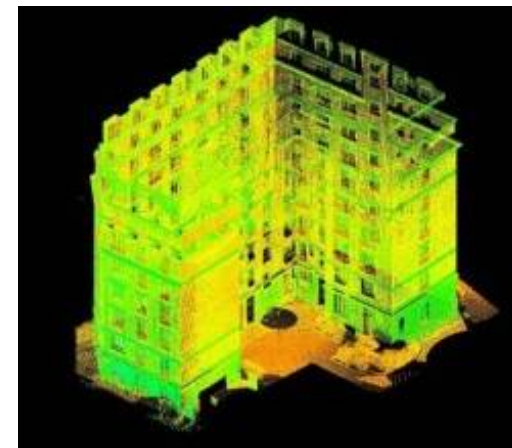


CTEC-3D



Une autre dimension pour vos études*

I - TATA STEEL Project (Wales)
II - AMSA Project (South Africa)



**Another dimension for your studies*

I – TATASTEEL PROJECT



Subject

3D scan and reverse design of a part of an industrial furnace

Factory

Tata Steel

Localisation

Newport (South Wales)

Date

12/12/2016 to
20/02/2017



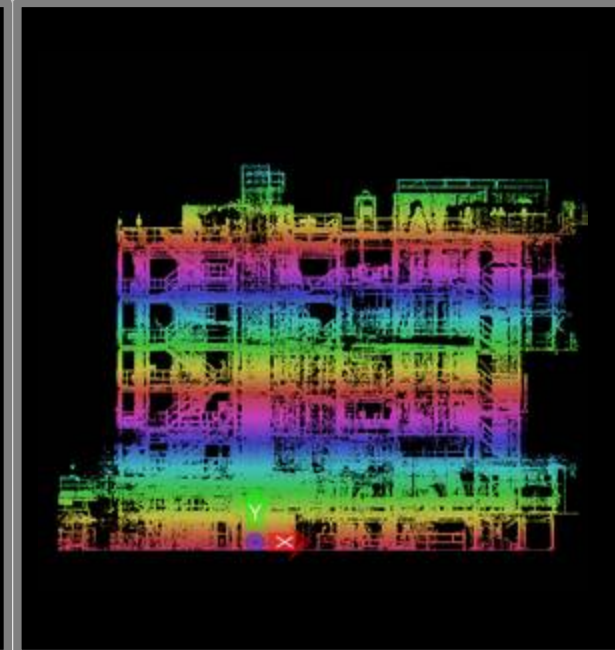
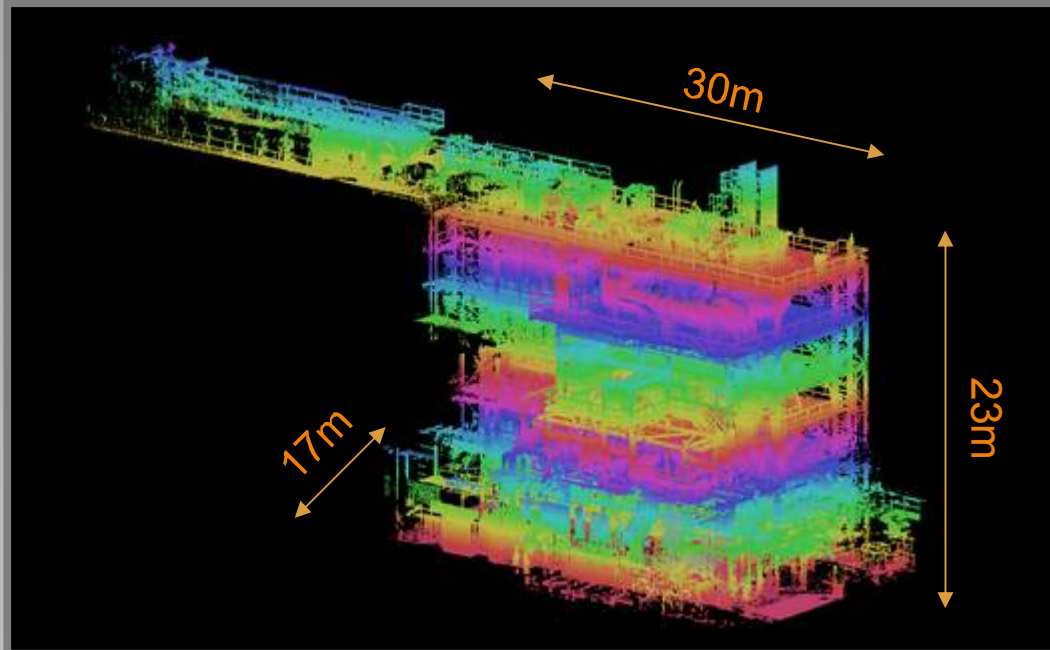
3D Laser Scan

Point Clouds
Viewer

Virtual Tour

Reverse Design
Structure, equipment,
pipes

3D Laser Scan



3D scan survey duration → 4 days
Point clouds processing duration → 3 days
Laser scanning equipment → Leica P30/P40



Software : Cyclone 9

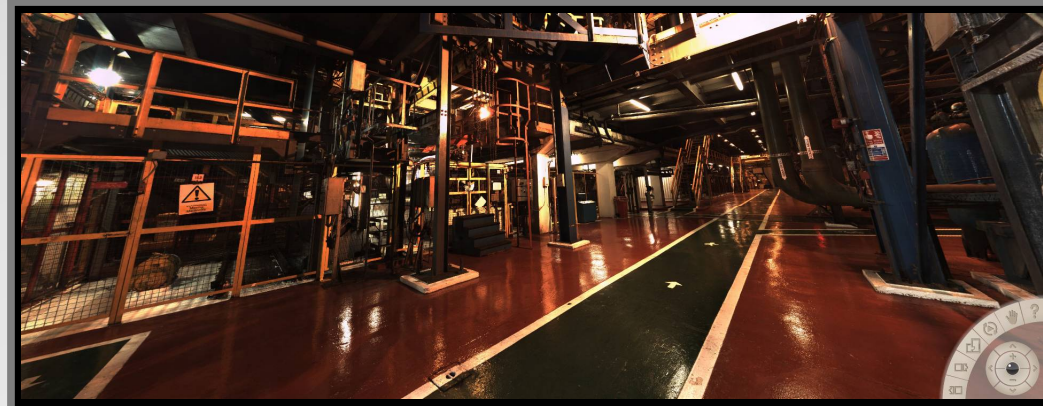
Point Clouds Viewer



« Truview » generation → ½ day

Software : Cyclone 9

Virtual Tour



Virtual tour generation → 2 days

Softwares : Kolor AutoPano Giga, Kolor Panotour Pro

Reverse Design

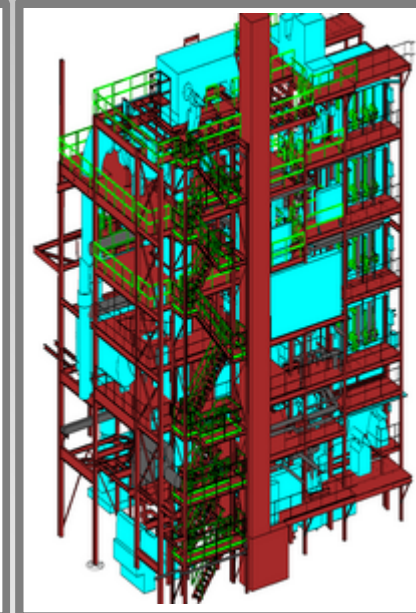
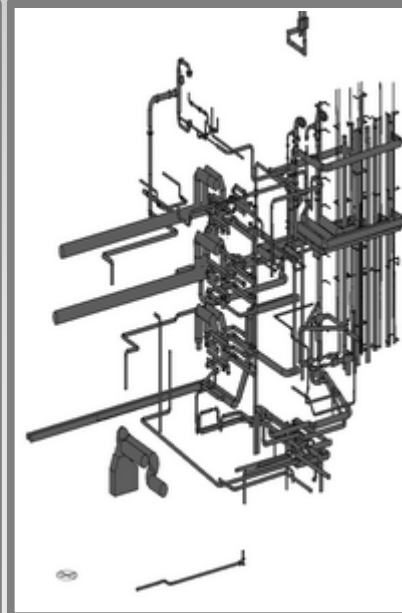
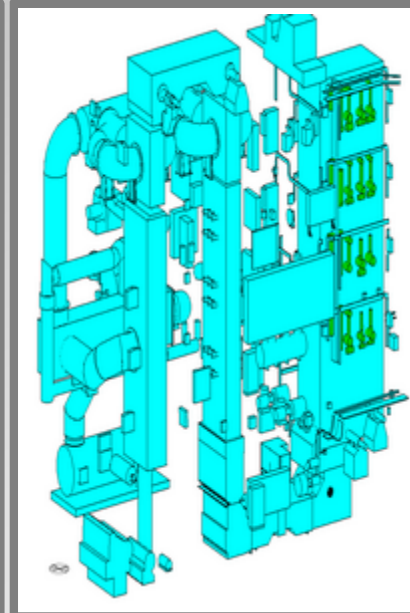
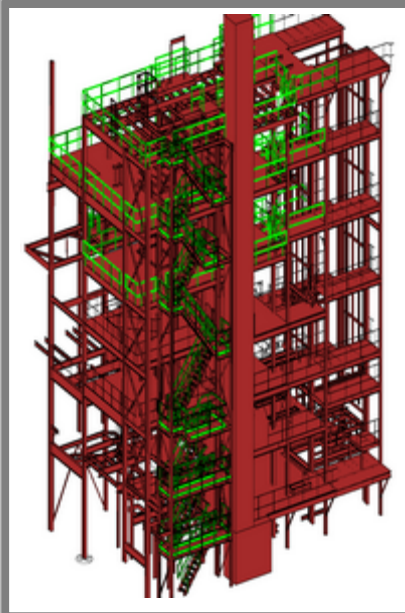


Structure → 10 days

Equipments → 7 days

Pipes → 7 days

TOTAL → 24 days



Software : MicroStation V8 (compatible with PDMS)

I – AMSA PROJECT



Subject

3D scan and reverse design of a part of an industrial furnace

Factory

Arcelor Mittal

Localisation

Johannesburg (South Africa)

Date

21/08/2017 to
27/09/2017



3D Laser Scan

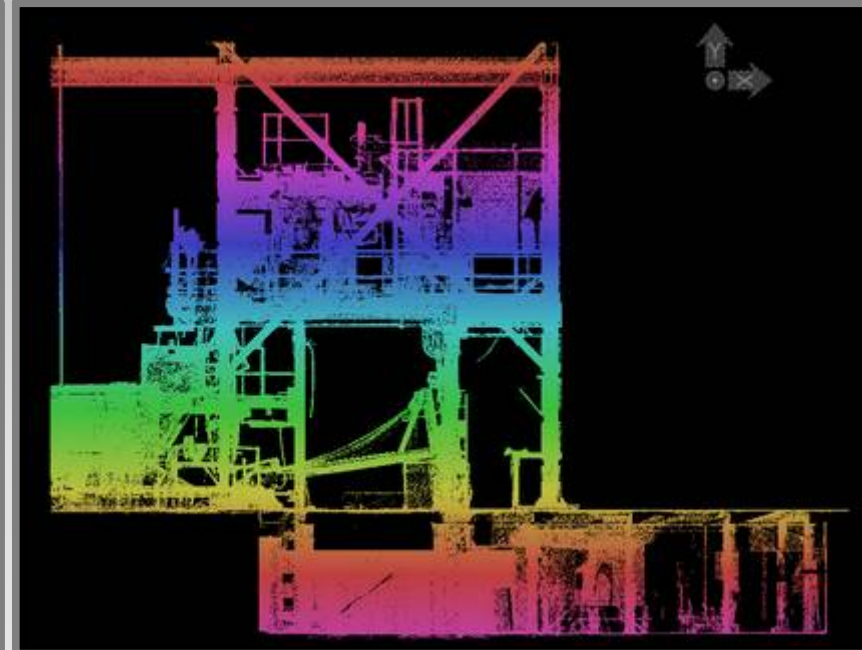
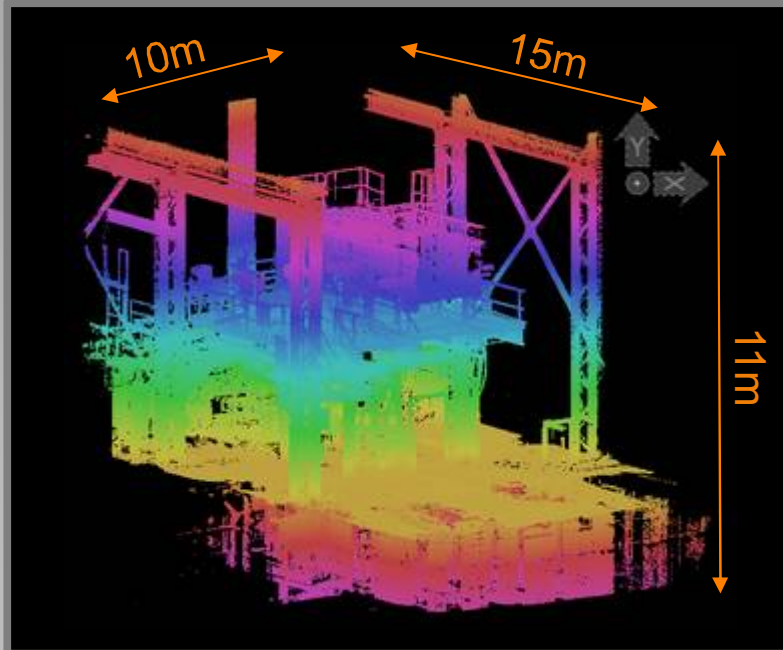
Reverse Design

Structure, equipment,
pipes

Integration of new
elements in the
existing 3D model

Clash
Report

3D Laser Scan



3D scan survey duration → 1 day
Point clouds processing duration → 1 day
Laser scanning equipment → Leica P30/P40

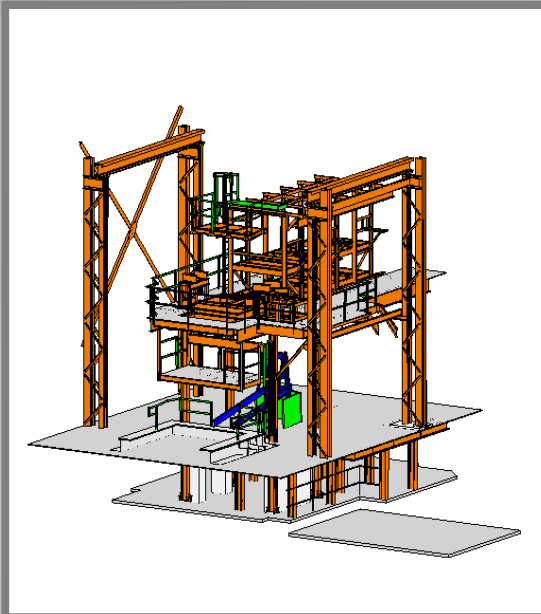


Software : Cyclone 9

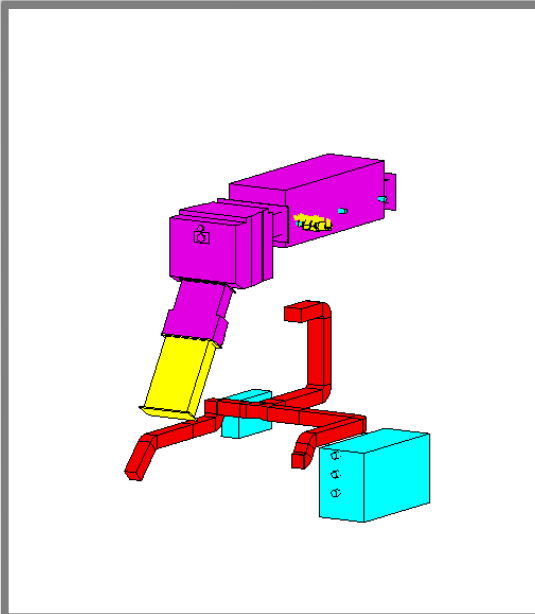
Reverse Design



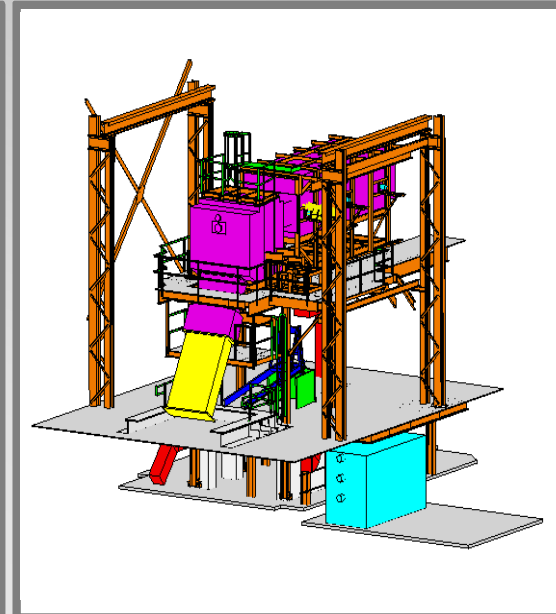
Structure → 4 days



Equipments → 1 day



TOTAL → 5 days

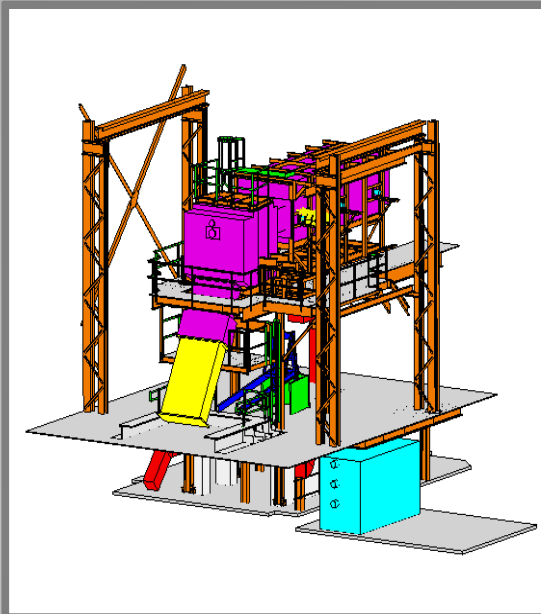


Software : MicroStation V8 (compatible with PDMS)

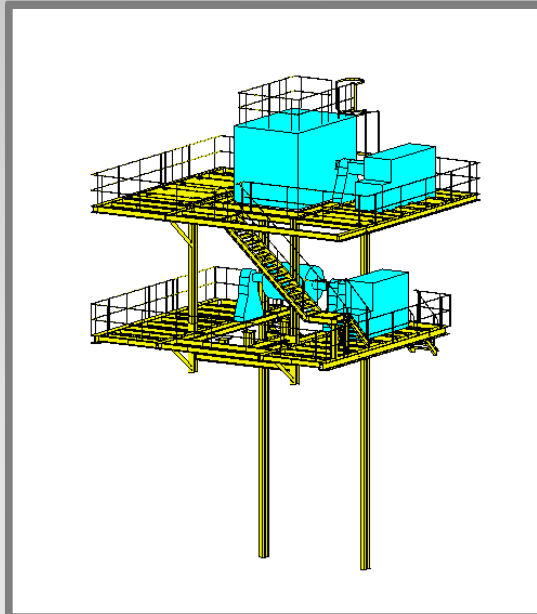
Integration of new elements in the existing 3D model



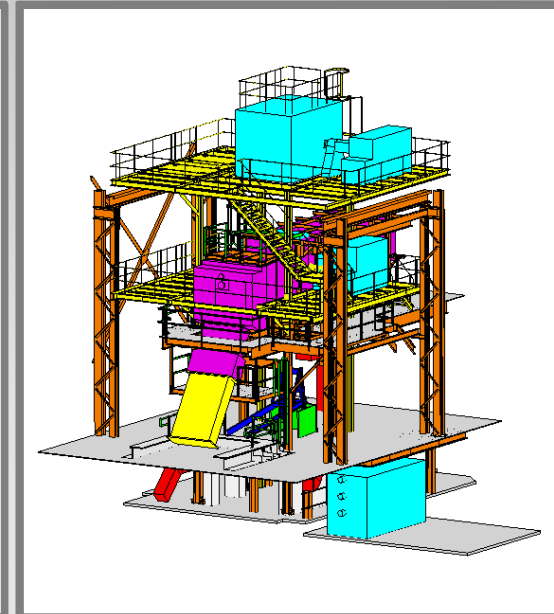
Reverse design model



New elements model



TOTAL



Integration duration → 2 days

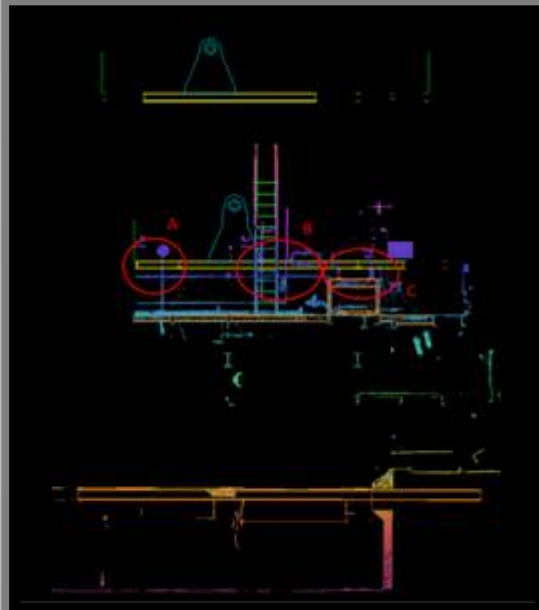
Software : MicroStation V8 (compatible with PDMS)

Clash Report

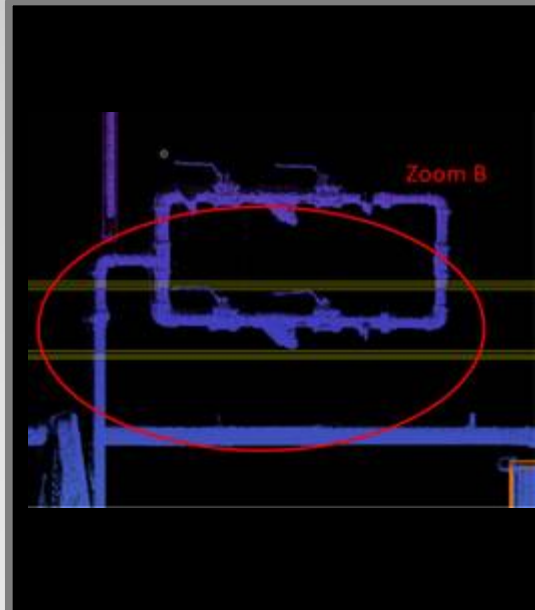


Clash report → Identification of clashes between the new integrated elements and the point cloud

Clashes localisation in the point cloud



Zoom on each clash in the point cloud



Zoom on each clash in the virtual tour



Clashes identification and report writing → 3 days

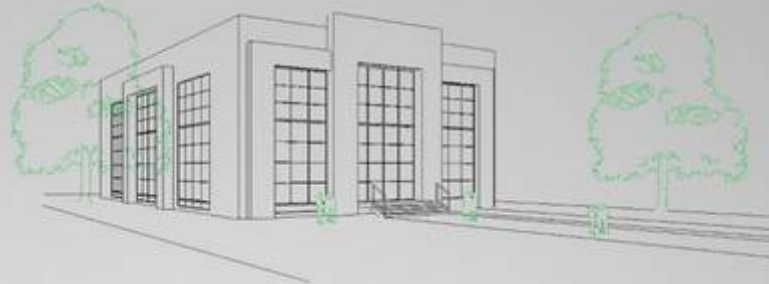
Software : MicroStation V8, Cyclone 9

CONTACT



CTEC-3D

www.ctec3d.com



Buchelay

INNEOS-1401
Avenue de la grande Halle
78200 BUCHELAY
tél. : +33 (0)1 34 78 82 30

Toulon

tél. : +33 (0)6 34 23 44 82

Belfort

6, rue du Rhône
Bâtiment A (3ème étage)
90000 BELFORT
tél. : +33 (0)9 52 21 10 81

Sébastien GELINEAU

CEO (Paris 75)
+33 (0)6.43.40.50.49
sebastien.gelineau@ctec3d.com

Edith MACCHI

Business Manager (Toulon 83)
+33 (0)6.34.23.44.82
edith.macchi@ctec3d.com

Damien BERNA

Design Manager (Belfort 90)
+33 (0)6.25.01.29.67
damien.berna@ctec3d.com

Merci de votre attention